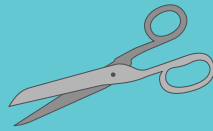


HOW TO MAKE A TREEHOUSE FROM PACKING BOXES

What you will need:



A Large Box



A Pair of Scissors



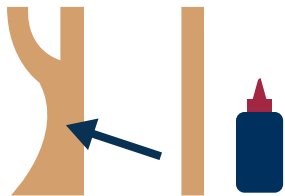
Paint & a Paintbrush



A Ruler



Glue

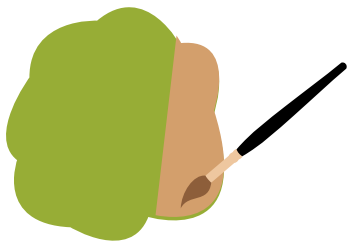
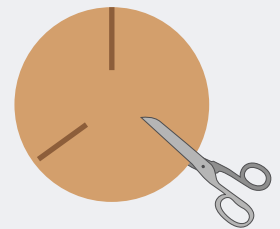


Step 1

Cut 3 trunks from the cardboard box, like so. To strengthen, glue a strip of cardboard (8x60cm) to each trunk.

Step 2

Now cut one 48cm circle for the base and three 30cm circles for the floors. Cut three slots into the base and floors, like so.

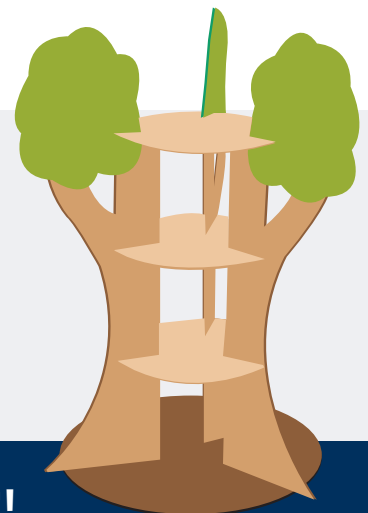


Step 3

Use some spare cardboard to cut out 3 tree canopy shapes. It would look better if you then painted these green.

Step 4

It's now time to assemble the tree! Slot the trunks into the base and add the floors accordingly. Slot the canopy shapes onto the top floor and glue them to the trunks to secure.



CONGRATULATIONS, YOUR TREEHOUSE IS COMPLETE!